

# Oil & Gas Bit Inventory Reduction Sale



# New Epiroc Bit Inventory Reduction Sale

- All bits are “new”
- Entire ‘lot’ normal retail value \$1,401,071.99
- Entire ‘lot’ is sale priced at \$399,990 or best reasonable offer
- Extended prices shown are normal retail pricing
- Sale package is subject to prior sale
- *Low usage QL120’s with retrievable chuck and hydro-cyclone back-head available*

## Contents:

- Page 3 is listing of the ‘lot’ of bits
- Page 4 is the Epiroc description - nomenclature of each

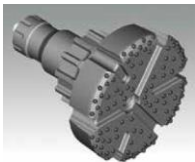
## Contact:

- Scott Slater 814-233-2943      [sslater@keystonedrill.com](mailto:sslater@keystonedrill.com)
- Tom Walker 814-442-5779      [walker@keystonedrill.com](mailto:walker@keystonedrill.com)

## Website:

- [www.keystonedrill.com](http://www.keystonedrill.com)

# New Epiroc Bit Inventory



Epiroc Part #	Bit Description	Quantity	Retail Price Each	Total Retail Price
52354230	6-1/4" QL60 R4 G10XXX	5	\$ 5,405.60	\$ 27,027.99
59000164	6-1/4" QL60 R4 G10XXXGPX	4	\$ 7,517.07	\$ 30,068.29
52354263	6-3/8" QL60 R4 G10XYY	1	\$ 3,680.95	\$ 3,680.95
52354255	6-3/8" QL60 R4 G10XXX	2	\$ 6,226.12	\$ 12,452.24
59000156	7-7/8" QL80 R4 XHG12XXXGPX	2	\$ 10,680.95	\$ 21,361.90
59000156	7-7/8" QL80 R4 XHG12XXXGPX	10	\$ 9,915.75	\$ 99,157.50
88053022	8-3/4" QL80 R4 SXHG9XXXGPX	2	\$ 13,052.64	\$ 26,105.28
52354640	8-3/4" QL80 R4 G12XXX	1	\$ 8,991.25	\$ 8,991.25
52354573	8-3/4" QL80 R4 G12XXX	1	\$ 8,136.25	\$ 8,136.25
59000108	8-7/8" TD90 R4 XHG12XYY	3	\$ 7,244.61	\$ 21,733.84
59000180	9-5/8" QL100 R4 XHG12XXXGPX	2	\$ 18,128.58	\$ 36,257.15
59000181	9-7/8" QL100 R4 XHG12XXXGPX	1	\$ 18,437.63	\$ 18,437.63
59000182	10-5/8" QL100 R4 XHG12XXXGPX	2	\$ 19,988.55	\$ 39,977.10
59000176	10-7/8" QL100 R4 XHG12XXXGPX	6	\$ 20,669.68	\$ 124,018.05
59000191	10-7/8" QL100 R4 XHG12XYYGPX	1	\$ 7,967.13	\$ 7,967.13
88052397	10-5/8" N10 R XHG12XXXGPX	4	\$ 16,000.00	\$ 64,000.00
88052389	10-7/8" N10 R XHG12XXXGPX	6	\$ 16,000.00	\$ 96,000.00
59000074	12-3/8" QL120 R4 HXYYPGX	2	\$ 18,991.32	\$ 37,982.64
59000070	12-3/8" QL120 R4 HXXX	3	\$ 21,516.39	\$ 64,549.18
59000073	12-3/8" QL120 R4 HXXXGPX	1	\$ 22,179.83	\$ 22,179.83
59000073	12-3/8" QL120 R4 HXXXGPX	1	\$ 22,978.33	\$ 22,978.33
59000124	12-3/8" QL120 R4 XAG15XXXGPX	1	\$ 25,486.71	\$ 25,486.71
59000194	14-3/4" QL120 R4 HXYYPGX	1	\$ 19,898.03	\$ 19,898.03
59000105	14-3/4" QL120 R4 HXXXGPX	2	\$ 25,000.00	\$ 50,000.00
59000057	17-1/2" QL120 R4 HXXX	9	\$ 33,971.67	\$ 305,745.01
59000321	8-3/4" TD90 RR XHG12XXXGPX	6	\$ 10,614.89	\$ 63,689.33
59000109	8-7/8" TD90 R4 XHG12XXXGPX	7	\$ 12,107.01	\$ 84,749.08
59000051	12-1/4" QL120 R4 HXYYPGX	1	\$ 14,978.45	\$ 14,978.45
59000055	17-1/2" QL120 R4 HXYYPGX	2	\$ 21,731.45	\$ 43,462.90

# Epiroc Bit Description

CONFIGURATION KEY:												
6" CLASS BITS												
XYX = 3/4" DIAMOND GAUGE ROW X 3/4" DYANITE CENTER INSERTS												
XXX = 3/4" FULL FACE DIAMOND INSERTS												
XXX-GPX = 3/4" FULL FACE DIAMOND INSERTS WITH DIAMOND GAUGE ROW PROTECTION												
7-7/8" & 8-3/4" QL80 BITS												
XXX = 3/4" FULL FACE DIAMOND INSERTS												
XHGXXGPX = 3/4" FULL FACE DIAMOND INSERTS WITH DIAMOND GAUGE ROW PROTECTION												
SXHGXXGPX = 7/8" DIAMOND INSERTS ON GAUGE ROW WITH 3/4" DIAMOND INSERTS ON THE FACE AND DIAMOND GAUGE ROW PROTECTION												
8-3/4" & 8-7/8" TD90 BITS												
XHGXYX = 7/8" DIAMOND INSERTS ON GAUGE ROW WITH 3/4" DYANITE INSERTS ON THE FACE												
XHGXYX = 7/8" DIAMOND INSERTS ON GAUGE ROW WITH 3/4" DYANITE INSERTS ON THE FACE												
XHGXXGPX = 7/8" DIAMOND INSERTS ON THE GAUGE ROW WITH 3/4" DIAMOND INSERTS ON THE FACE AND DIAMOND GAUGE ROW PROTECTION												
9-5/8" THROUGH 10-7/8" QL100 BITS												
XHGXXGPX = 7/8" DIAMOND INSERTS ON THE GAUGE ROW WITH 3/4" DIAMOND INSERTS ON THE GAUGE ROW PROTECTION												
XHGXYGPX = 7/8" DIAMOND INSERTS ON THE GAUGE ROW WITH 3/4" DYANITE INSERT ON THE FACE WITH DIAMOND GAUGE ROW PROTECTION												
10-5/8" THROUGH 10-7/8" N10 BITS												
XHGXXGPX = 7/8" DIAMOND INSERTS ON THE GAUGE ROW WITH 3/4" DIAMOND INSERTS ON THE FACE WITH DIAMOND GAUGE ROW PROTECTION												
12-3/8" THROUGH 17-1/2" QL120 BITS												
HXYX - 1" DIAMOND INSERTS ON THE GAUGE ROW WITH 3/4" DYANITE INSERTS ON THE FACE												
HXXX - 1" DIAMOND INSERTS ON THE GAUGE ROW WITH 3/4" DIAMOND INSERT ON THE FACE												
HXXXGPX - 1" DIAMOND INSERTS ON THE GAUGE ROW WITH 3/4" DIAMOND INSERTS ON THE FACE WITH DIAMOND GAUGE ROW PROTECTION												
HXYGPX - 1" DIAMOND INSERTS ON THE GAUGE ROW WITH 3/4" DYANITE INSERT ON THE FACE WITH DIAMOND GAUGE ROW PROTECTION												
XAGXXGPX - 3/4" DIAMOND INSERTS ON THE GAUGE ROW WITH 3/4" DIAMOND INSERTS ON THE FACE WITH DIAMOND GAUGE ROW PROTECTION												



[WWW.KEYSTONEDRILL.COM](http://WWW.KEYSTONEDRILL.COM)